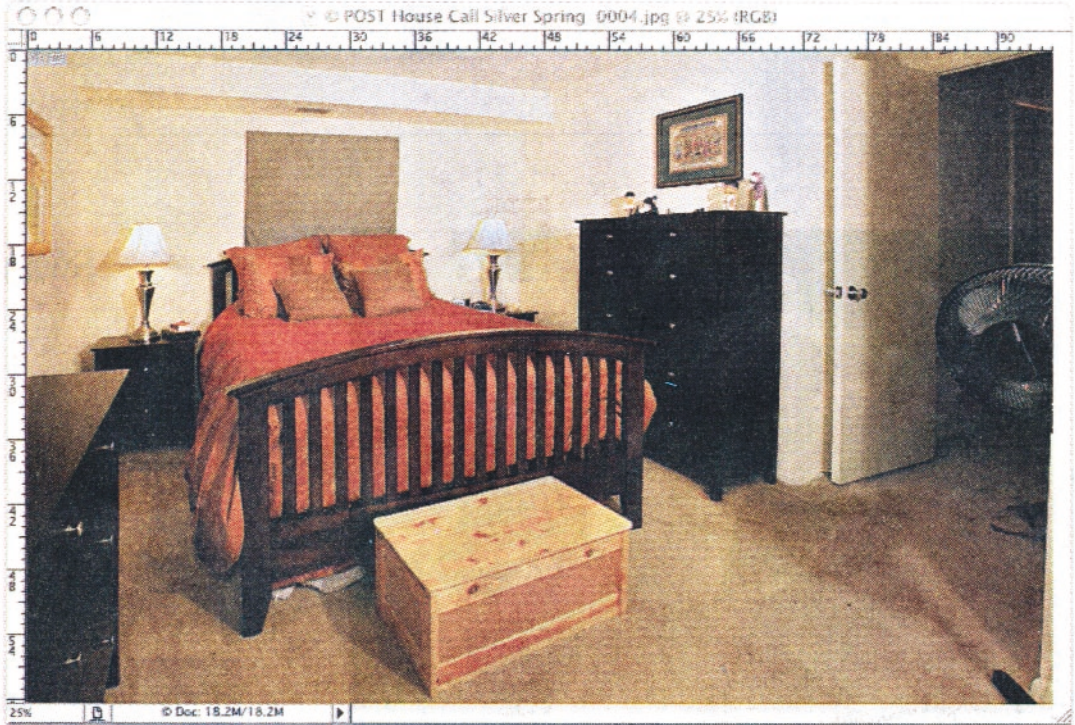


## HOUSE CALLS

**Charles and Erin Huband, who married last December, are pleased with changes they've made to their rented Silver Spring apartment except in the bedroom: too much clunky furniture, too little else. (The landlord says they can paint!) Deborah Wiener of Designing Solutions in Silver Spring (301-445-6336 or [www.mydesigningsolutions.com](http://www.mydesigningsolutions.com)) offered help.**



BY LEN SPODEN FOR THE WASHINGTON POST

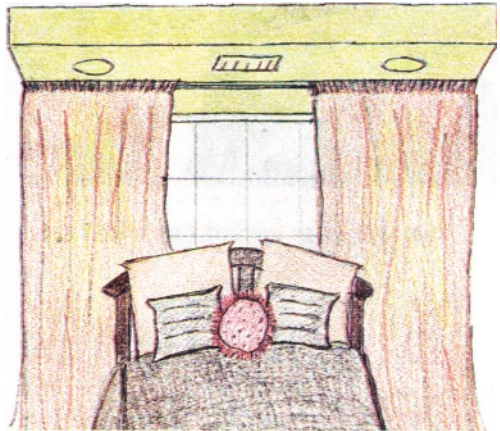
**De-clutter the space** by removing the blanket chest and footboard (hold onto them for use in a larger future home).

**Hang curtains** from a decorative rod as wide as the wall for height and drama. They'll make the small window look larger when partially open, and block light, heat or cold when closed. Try Pottery Barn's 104-inch-wide, lined Dupioni silk panels in amber, honey or wheat (\$199 each for 84-inch length). Use PB's \$79 extra-large cast-iron rod (up to 120 inches at [www.potterybarn.com](http://www.potterybarn.com)). If the wall is wider, use two smaller rods with a bracketed connector.

**Consider earth tones** to complement the existing bedding and carpet. Paint the ceiling Benjamin Moore Soft Pumpkin (No. 2166-40), the walls and soffit over the bed Roasted Sesame Seed (No. 2160-40), and the molding and baseboards Maple Sugar (No. 2160-30), which is one shade darker than the walls.

**Paint closet doors** Roasted Sesame Seed, or spring for mirrored folding doors to brighten the room — "If you don't think it will look

like a honeymoon suite in the Poconos," says Wiener. **If you plan to stay awhile**, simple crown molding would add architectural interest, and a recessed ceiling light above each nightstand would showcase the headboard and curtains. (Maybe that nice landlord would kick in on this permanent improvement). **Center the mirror** over the low dresser and flank it with the existing bedside lamps.



BY DEBORAH WIENER FOR THE WASHINGTON POST

like a honeymoon suite in the Poconos," says Wiener. **If you plan to stay awhile**, simple crown molding would add architectural interest, and a recessed ceiling light above each nightstand would showcase the headboard and curtains. (Maybe that nice landlord would kick in on this permanent improvement). **Center the mirror** over the low dresser and flank it with the existing bedside lamps.



Benjamin Moore earth tones.



**Want to try our take on your room?** Tell us about your design challenge, and send photos and room dimensions to [makeover@washpost.com](mailto:makeover@washpost.com) or write to House Calls, Home Section, The Washington Post, 1150 15th St. NW, Washington, D.C., 20071